

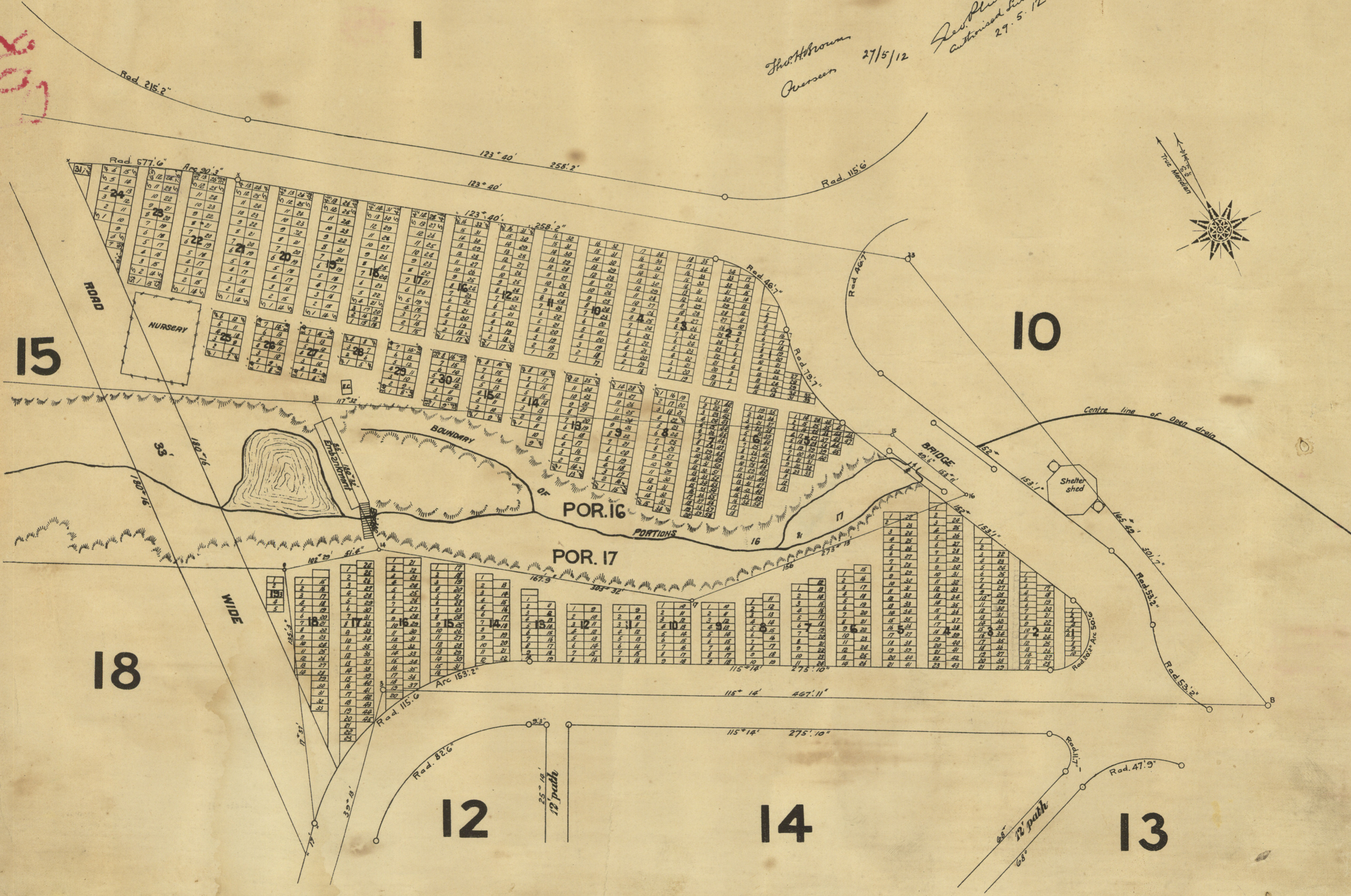
BRISBANE GENERAL CEMETERY

PLAN OF PORTIONS 16 & 17

SCALE 1 INCH = 57 FEET

Theo. H. Brown
Overseer 27/5/12
Geo. Phillipp
Authorized Surveyor
27.5.12

109



15

10

18

12

14

13

BRISBANE GENERAL CEMETERY

PLAN OF PORTIONS 16 & 17

SCALE 1 INCH = 57 FEET

*Shd. Johnson
Overseer 27/5/12*

*Geo. Phillips
Assistant Surveyor
27.5.12*

