

# BRISBANE GENERAL CEMETERY

## PLAN OF PORTION 12

SCALE 1 INCH = 40 FEET

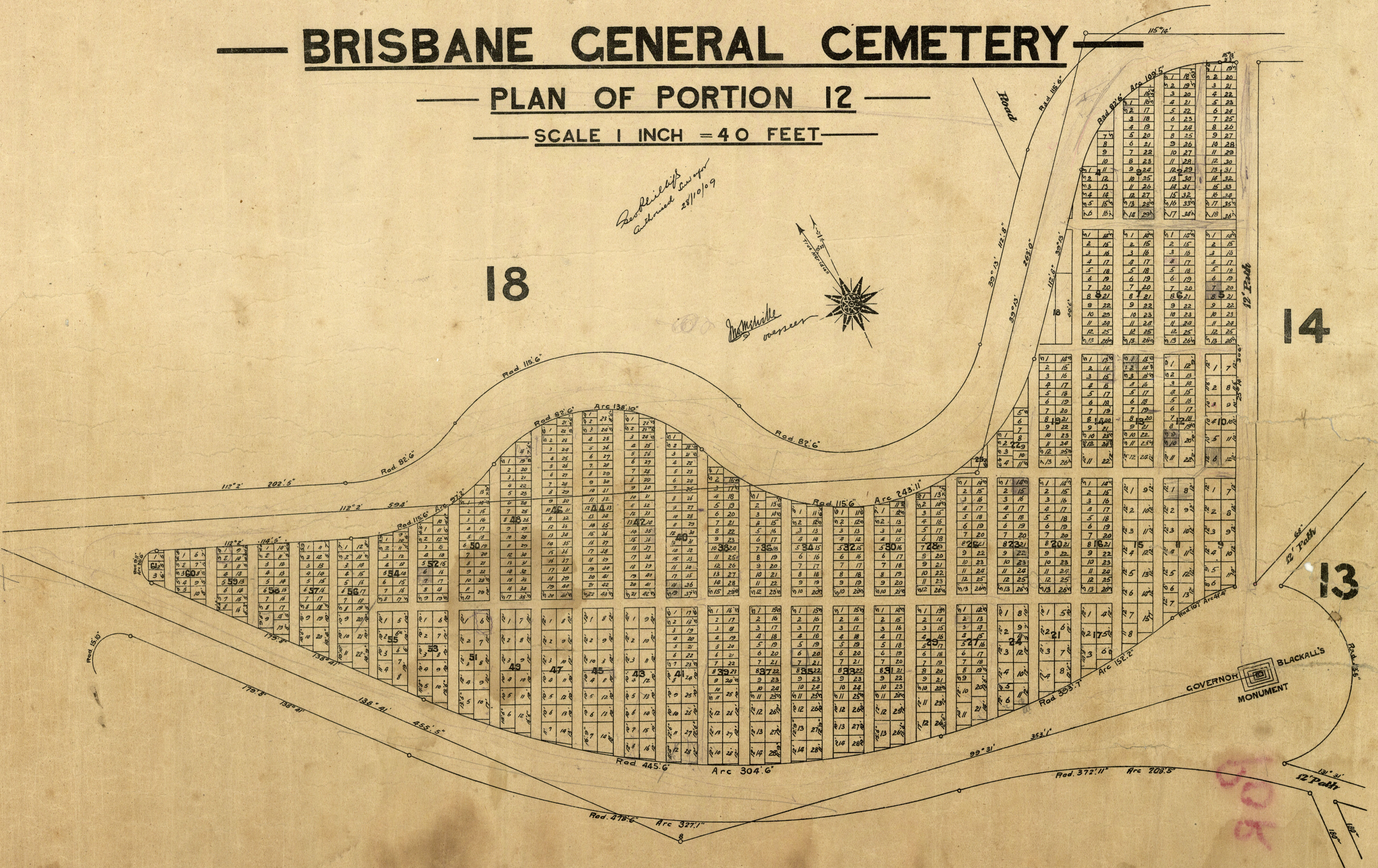
*Revised Survey  
Approved 28/10/09*

18

14

13

11





# BRISBANE GENERAL CEMETERY

# PLAN OF PORTION 12


**SCALE 1 INCH = 40 FEET.**

Geo. Phillips saw and  
authorized 28/10/09

18

14

13

GOVERNOR  BLACKALL'S  
MONUMENT

No. 7